

MGA08021 / MGA16022

5MP Lite AHD Hybrid DVR



Date: 14 June 2019(R)

MGA08021 /MGA16022 Series

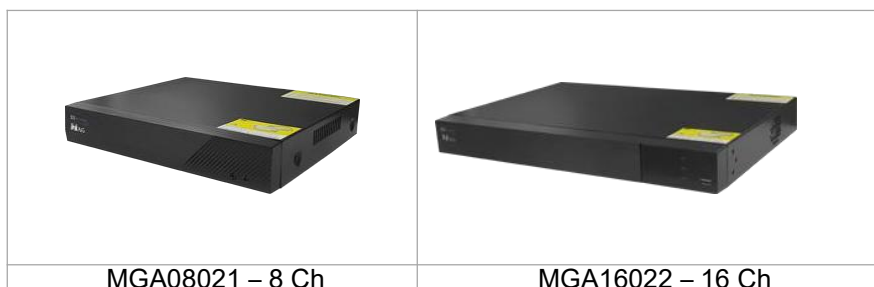
MGA08021 / MGA16022 series are standard 8/16 ch real time 5MP high resolution hybrid's DVRs with ability to connect analog and IP cameras simultaneously which adopt the standard H.265 high profile compression format and the most advanced SOC technique to ensure real time recording in each channel and realize outstanding robustness of the system.

MGA08021 / MGA16022 series DVR most unique feature is the smart phone video playback- True mobility surveillance at a very affordable price. Now not only you could stream up to 4/8/16 ch live view to your smart phone (both IOS and Android), you could also **playback previously recorded videos**. Video clips can be search by date or time and playback 1 ch at a time.

The series of product can meet different security requirement of home, financial, commerce, enterprise, transportation and government, etc.

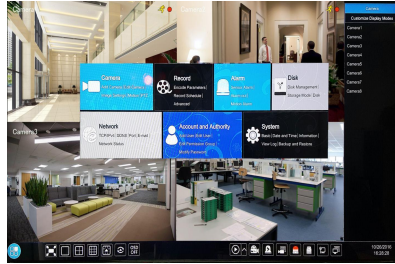
Standard Features :

- 8 / 16 CH AHD/TVI/CVI video input 5MP/1080P/ 720P/ 960H recording
- Support 1CH IPC 3MP/1080P / 720P / 960H / D1 recording.
- Multi-mode recording : manual / timer / motion
- Playback : 4/8/16 CH simultaneously playback.
- Search: time slice, time, events (motion, manual, sensor), tag search
- Express and flexible backup via USB, network.
- Pentaplex : preview, record, playback, backup, and remote access
- Multi user online simultaneous.
- Authorization management, log review and device status review.
- HDMI 4K output, true high resolution display.
- Support PTZ present and auto cruise up to 128 presets and 8 cruises.
- Powerful smart phone surveillance supporting Iphone and Android.
- Support NAT function, support QR code scanning by mobile phone.
- Complete SDK software available, easy to integrate with other application.
- Adopt standard H.264 high profile compression format to get high-quality video at much lower bit rate.
- Intuitive and user-friendly Graphics User Interface (GUI), window style operation by mouse.
- Dual stream technology for local storage with high definition, remote network transmission and remote surveillance with mobile device
- Remote control via IE or CMS: preview, playback, backup, PTZ, and configuration.
- DHCP, DDNS, PPPoE network protocol, IE browser and CMS supported.

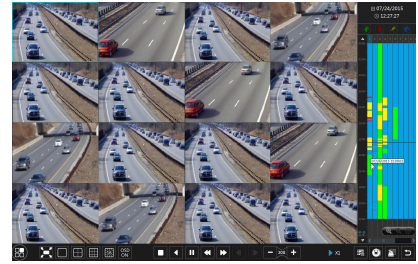




Multi tab live view



User friendly graphic user interface



16 channel simultaneous playback

Specification:

Model	MGA08021 – 8 channel	MGA16022 – 16 channel
Camera Input	8CH	16CH
Operating System	Embedded Linux	
Mode	Pentaplexer (Live / Recording / Playback / Network / Backup)	
Video Compression	H.265	
Video Input	BNC x 8 (Composite / 75Ω Balanced)	BNC x 16 (Composite / 75Ω Balanced)
IP Input / access bandwidth	IPC X 4 / 24Mbps	IPC X 8 / 24Mbps
Video Output	VGA(1920 x 1080) x 1, HDMI x 1 (1920 x 1080), Main: BNC X 1	VGA(1920 x 1080) x 1, HDMI x 1 (1920 x 1080), Main: BNC X 1
Audio Input	RCA x 1	RCA x 8
Audio Output	RCA x 1	RCA x 1
Two-way Audio	Take up channel one audio input	
Alarm Input	No	16
Alarm Output	No	4
Record Resolution	5MP/ 1080P/ 720P/ WD1	
Record Frame Rate	5MP: 10fps 1080P/720P/WD1: 25fps (PAL), 30fps (NTSC)	
Record Bit Rate	768Kbps ~ 8Mbps	
Record mode	Manual, timer, motion, sensor	
IP Input resolution	3MP	
IP Frame rate	25fps (PAL) / 30fps (NTSC)	
Play back	8ch	16ch
Play back search	Time slice, time, event, tag search	
Play back smart search	Highlighted color to display the camera record in a certain period of time, different colors refers to different record events	
Alarm mode	Manual, sensor, motion, exception	
Triggering	Record, snap, preset, email	
Network Interface	RJ45 10/100Mbps x 1	
Network Protocol	TCP/IP, PPPoE, DHCP, DNS, DDNS, UPnP, NTP, SMTP	
Network Web Client	Multiple users online	
Mobile device OS	iOS, Android	
Storage	SATA x 1, max 8T	SATA x 2, max 8T per HDD
Local Backup	U disk, USB mobile HDD	
Network Backup	Yes	
RS485 port	RS485 x 1, connect to PTZ or keyboard	
USB port	USB 2.0 x 1 (front panel), USB 3.0 x 1 (rear panel)	
Remote controller	Yes	
Power supply	DC 12V	
Consumption	≤ 10W (without HDD)	≤ 15W (without HDD)
Dimensions (mm)	300 x 247 x 43	380 x 267 x 43
Work Environment	-10 ~ 50 °C , 10% ~ 90% humidity	